



PORT OLÍMPIC
BARCELONA

Rental of spaces



Barcelona 

B+M

A port open to the sea, to people and to Barcelona

Inaugurated in 1990, the Port Olímpic was the setting for the sailing competitions during the 1992 Olympic Games. Games that placed Barcelona in the world and marked a before and after in the role of the host cities.

The Port Olímpic is also one of the emblematic elements of the Barcelona skyline.

Memory, heritage and future converge in this reference location which, in this new stage, opens to the sea, the city and the world.



Location and acces

Next to the Port Olímpic, important university and scientific centers converge. It is close to dynamic economic environments, such as the 22@ technological district or the Port of Barcelona.

In addition, it has excellent connections with the public transport network.



Campus Diagonal
Besòs UPC

DISTRICTE 22@

Port de
Barcelona

Universitat Pompeu
Fabra / Ciutadella del
Coneixement

Metro L4
Ciutadella
Vila Olímpica

Fundació Mapfre
Torre Mapfre
Hotel Arts

Parc de Recerca Biomèdica de Barcelona

Hospital del Mar

Institut de Ciències del Mar

R Rodalies Renfe
Estació de França

PLATJA
NOVA ICÀRIA

PORT
OLÍMPIC

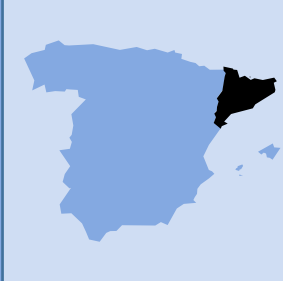
PLATJA
SOMORROSTRO

PLATJA DE LA BARCELONETA

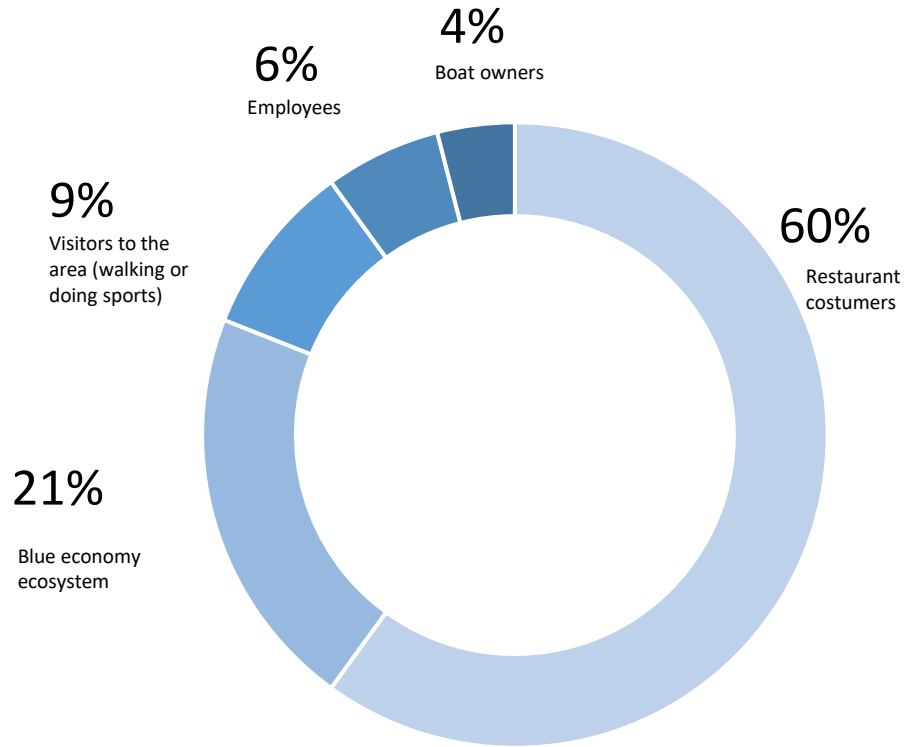


Josep Tarradellas Airport
Barcelona-El Prat

- 10 min from the city center
- 10 min from Port de Barcelona
- 15 from the technological district of 22@
- 20 min from Aeroport BCN - El Prat



2.6 million visitors expected annually



Nationality



How to get here

ARRIVING BY PUBLIC TRANSPORT

If you use the public transport, these are the best options for you:

- **Bus:** 47, 59, 136, H16, V21, V23, V27.
- **Metro:** L4 - Ciutadella Vila Olímpica
- **Tram:** T4 - Ciutadella Vila Olímpica
- **Renfe:** Estació de França



ARRIVING BY PRIVATE TRANSPORT

PORT OLÍMPIC BSM PARKING

Caravans and trailers are not allowed



Parking fee for passenger cars:
1 Hour: 3,80 €

Per-minute price. VAT included.

Free for the first 30 minutes.



Parking fee for motorcycles:
1 Hour: 1,00 €

Per-minute price. VAT included.

Free for the first 30 minutes.



Loading and unloading timetables:

Monday to Friday

6 am to 1 pm and 5 to 7 pm.

Weekend and holidays

6 am to 1 pm.

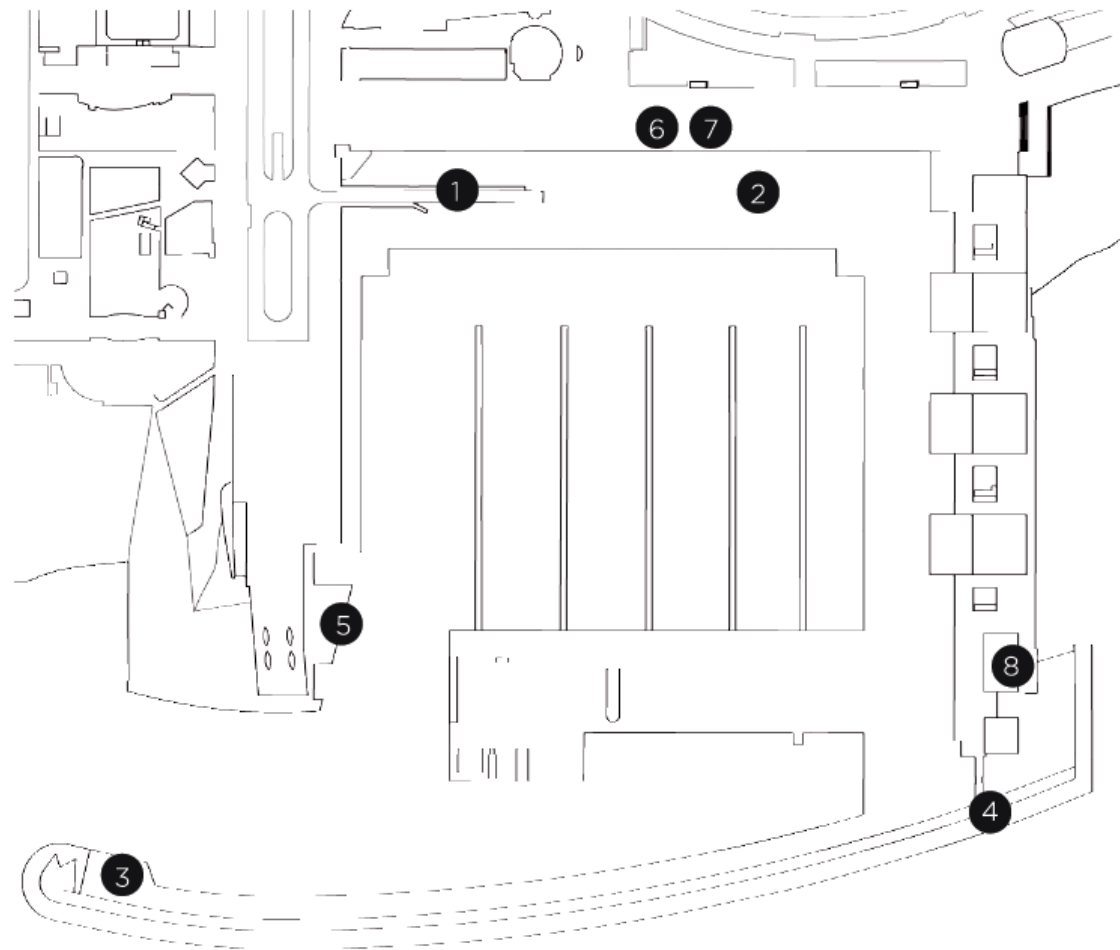
Available spaces

Exteriors

1. Mestral/Marina esplanade (2.317 m²)
2. Mestral/Gregal esplanade (2.476 m²)
3. Recer/Marina area (600 m²)
4. Recer/Gregal area (240 m²)
5. Marina Pool area

Interiors

6. Mestral space – Full conference room (256 m², 140 pax)
7. Mestral space – Offices/Reception (116 m², 50 pax)
8. Gregal room (240 m²)

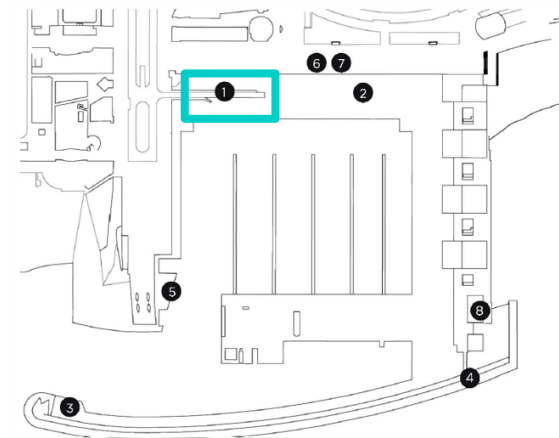


Exteriors

1. Esplanade Mestral/Marina

Surface	Rate/day*	Rate/half day*
2.317 m ²	6.000 €	3.600 €

*VAT not included

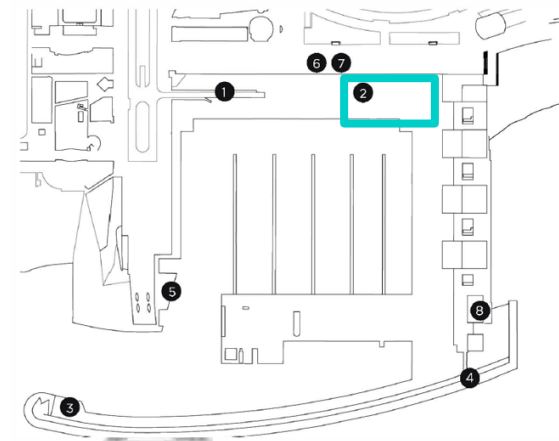


Exteriors

2. Esplanade Mestral/Gregal

Surface	Rate/day*	Rate/half day*
2.434 m ²	6.000 €	3.600 €

*VAT not included



Mestral esplanade – Different formats

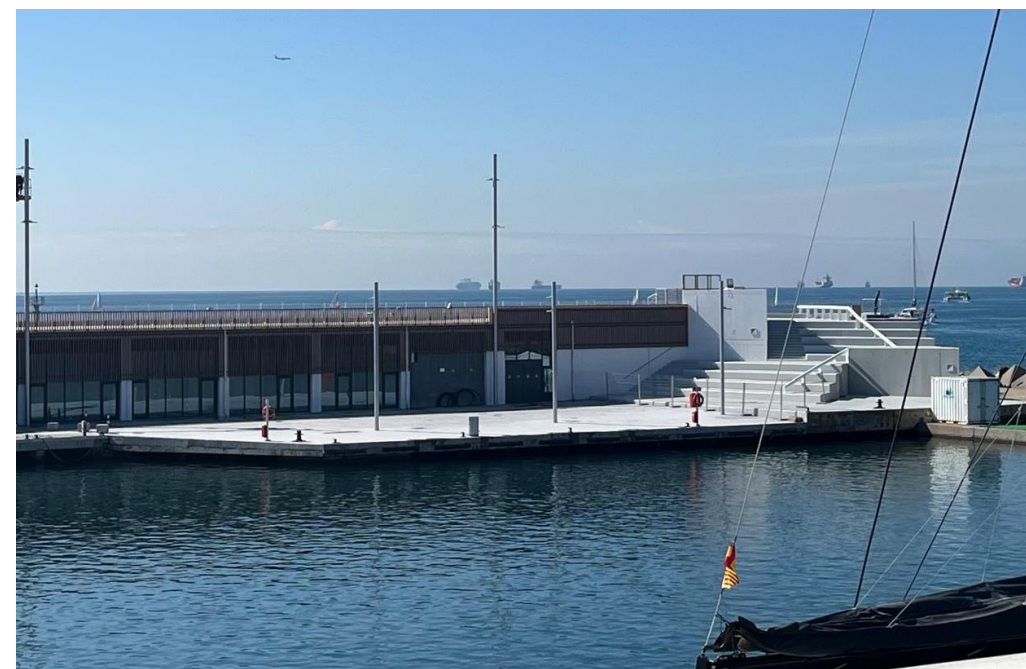
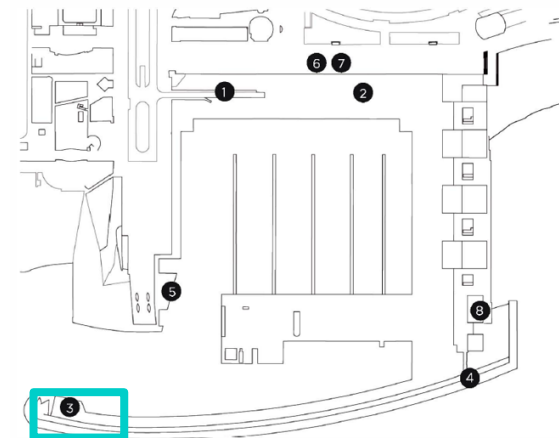


Exteriors

3. Recer/Marina area

Surface	Rate/day*	Rate/half day*
600 m ²	1.500 €	900 €

*VAT not included

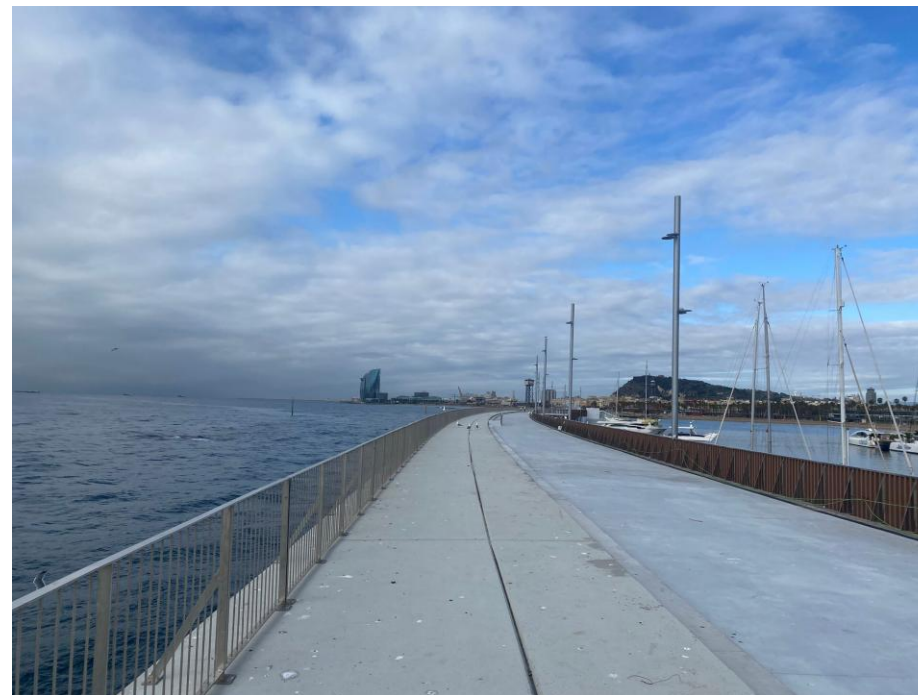
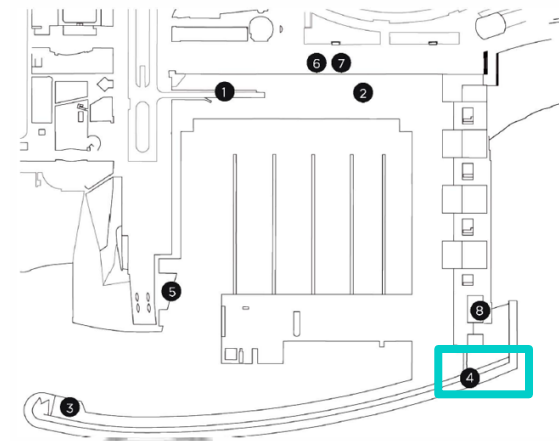


Exteriors

4. Recer/Gregal area

Surface	Rate/day*	Rate/half day*
240 m ²	600 €	360 €

*VAT not included

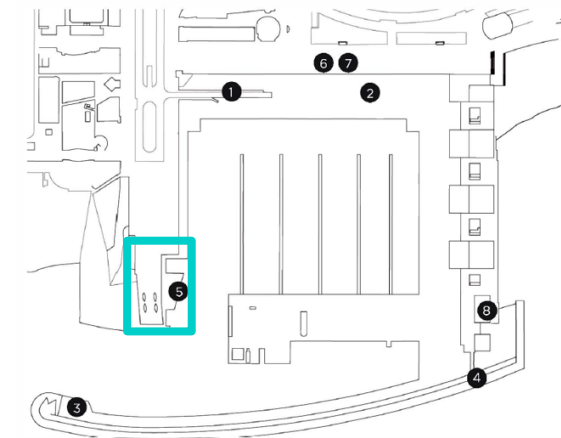


Exteriors

5. Marina Pool area

Surface	Rate/day*	Rate/half day*
600 m ²	1.500 €	900 €

*VAT not included

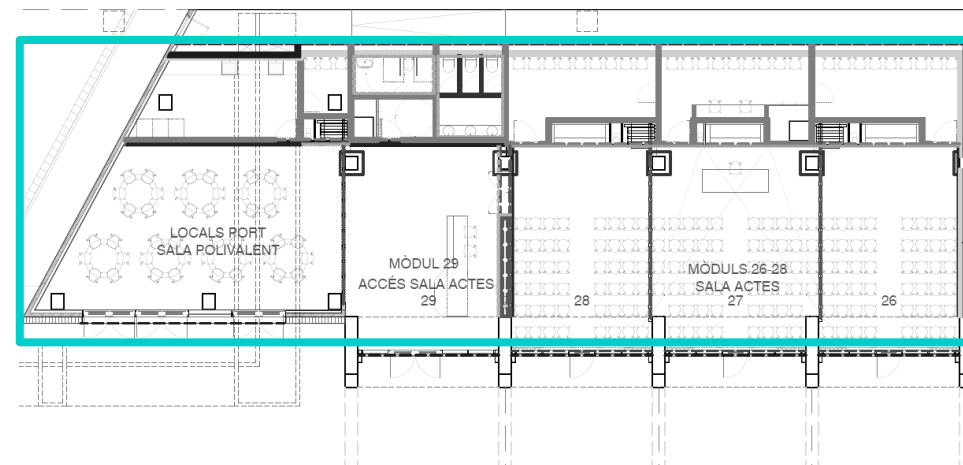


Interiors

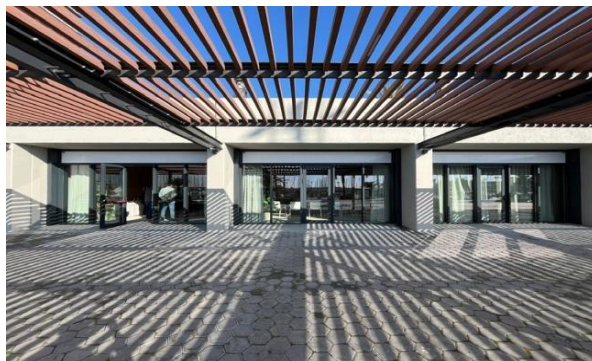
6. Mestral Space

Space	Surface	Capacity (pax)	Rate/day*	Rate/half day*
Multipurpose room	65 m ²	140	2.700 €	1.550 €
Lobby	51 m ²			
Conference room	140 m ²			

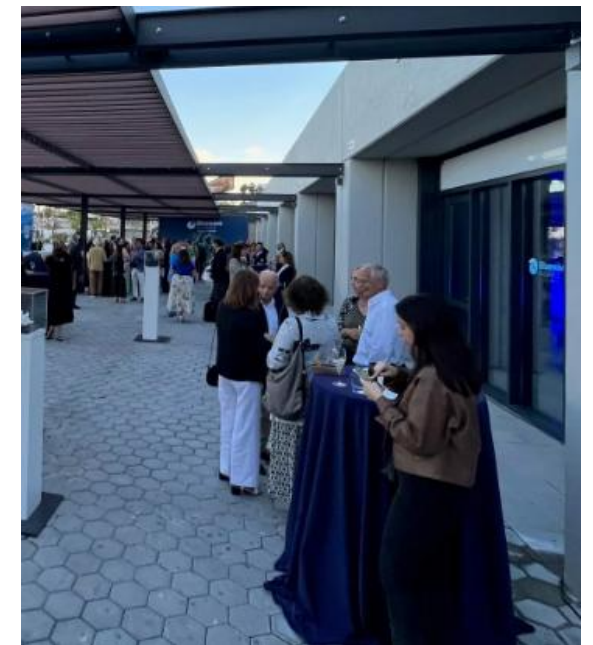
*VAT not included



PLANTA COTA PORT TRAM C



Mestral space – Different formats



Audiovisual Equipment

TO EACH OF THE 3 ROOMS:

Audio:

3	Sennheiser	MEG14-40B	Gooseneck microphone with a length of 40cm. XLR3 connector and cardioid microphone capsule.
3	Sennheiser	MAT 133 S-B	Desktop XLR-3 stand, black color, PTT.
1	Sennheiser	EW-D ME 3 Set	Digital wireless microphone set. Includes stationary receiver, bodypack transmitter, and headset microphone.
1	Sennheiser	EW-D 835-S Set	Digital wireless microphone set. Includes stationary receiver and handheld transmitter.

Video:

1	Philips	98BDL46 50D	Professional 98" monitor with a resolution of 3840 x 2160p. Brightness of 500cd/m2. Intensive 24/7 usage.
1	JVC	KY-PZ400N WE	PTZ 4K multipurpose camera. 1/2.5" CMOS (8.51 Mp). 12x optical zoom (16x Digital). Simultaneous output, IP 3G HSDI or IP HDMI 4K. Dual Streaming H265/H264/MJPEG, SRT, direct NDI from camera. 2-channel audio. Control: IP, RS-232, RS-485. USB 3.0. Power supply: 12V DC or PoE. Includes: AC adapter and IR remote control for 4 KY-PZ400 cameras. White color.

External connections:

1			<p>Connection box:</p> <ul style="list-style-type: none"> - 3 XLR connections for table microphones - Two HDMI inputs with automatic switching (HDMI 1 priority over HDMI 2) or manual switching via selector. With audio output to the PA system. - One USB WEBCAM output with video signal from the camera and audio signal from the room. - One HDMI output to connect a PC monitor with mirrored projection/TV image.
---	--	--	---

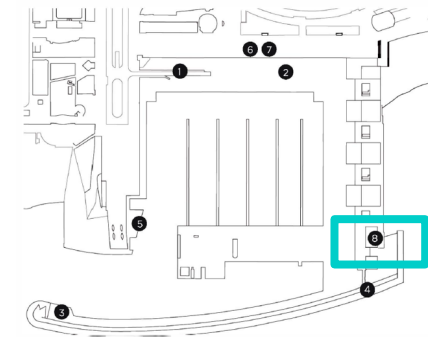
1			HDMI connection point at the back of the room. No audio extraction.
---	--	--	---

Control system:

1	Crestron	TSW-770-W-S	Exclusive 7" touchscreen audiovisual control panel for each room.
---	----------	-------------	---

Interiors

8. Gregal Room

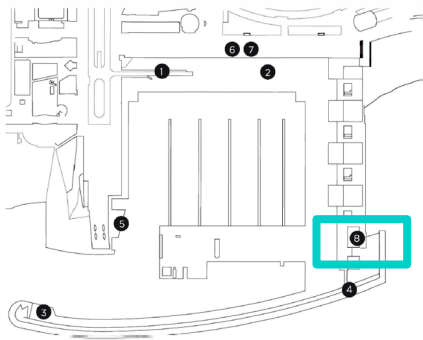




Areas	Surface	Capacity (pax)	Rate/day*	Rate/half day*
Meeting room	126 m2			
Terrace	53 m2	50	1.860 €	1.100 €
Hall	61 m2			

*VAT not included

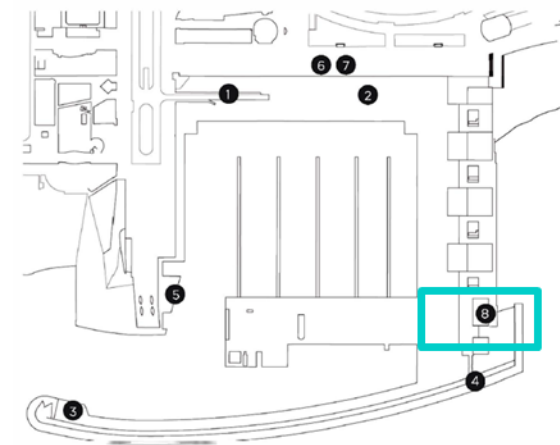
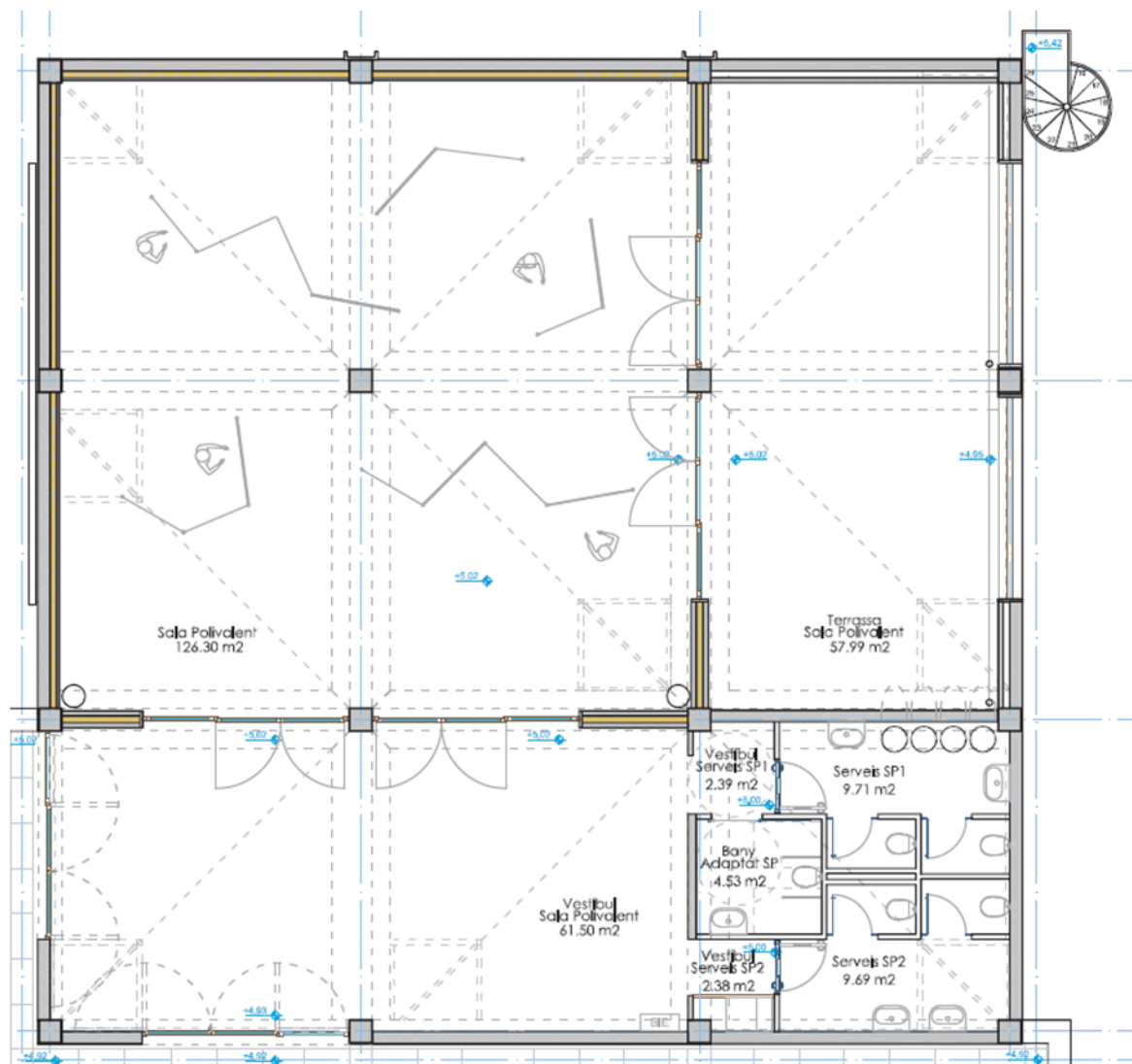


Gregal room | 239m²



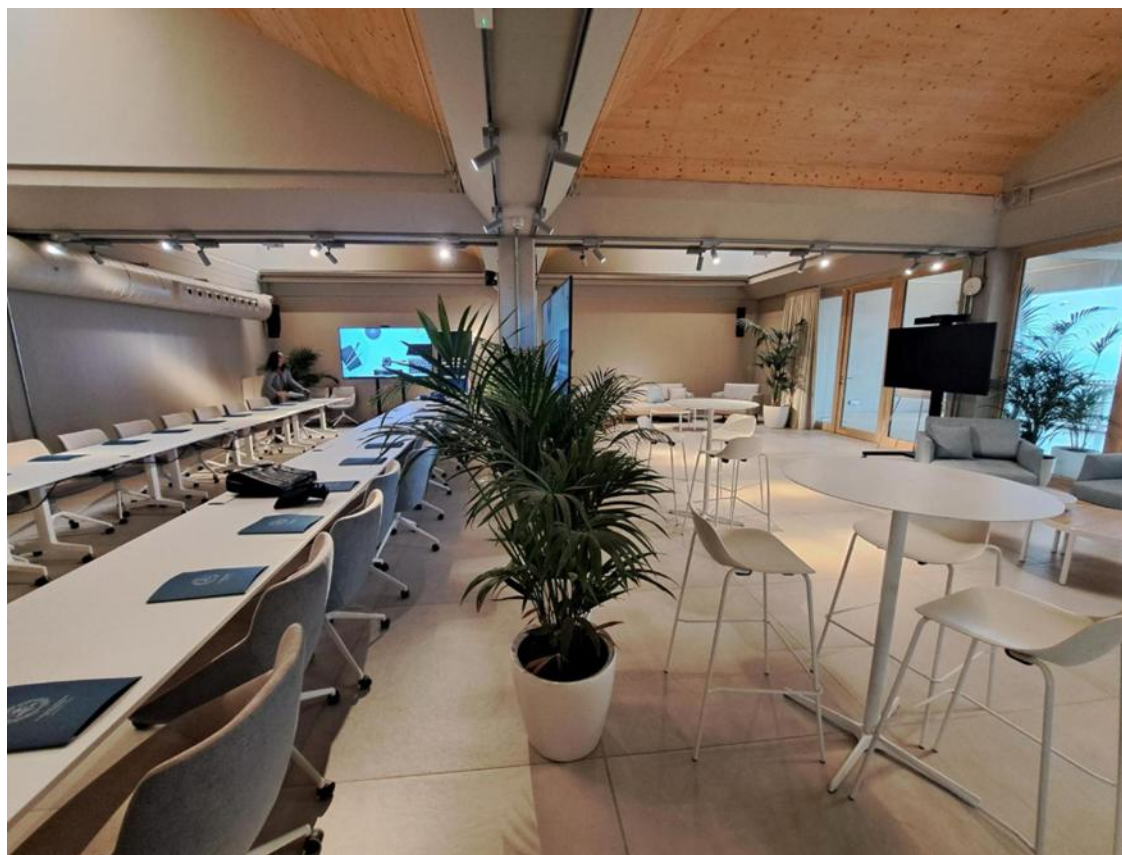
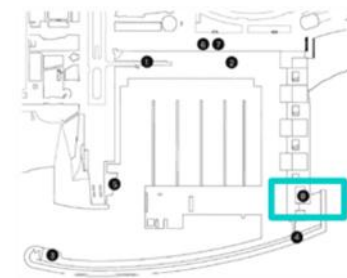
-  Gregal room
-  Outdoor space

Gregal room | 274,49 m²



QUADRE PLANTA COTA CIUTAT		SUP.ÚTIL	SUP.CONST.
CODI	INTERIORS		
1.1.1	VESTÍBUL SALA POLIVALENT	61.50 m ²	
1.1.2	VESTÍBUL SERVEIS SP1	2.39 m ²	
1.1.3	VESTÍBUL SERVEIS SP2	2.38 m ²	
1.2.1	SALA POLIVALENT	126.30 m ²	
1.3.1	SERVEIS SP1	9.71 m ²	
1.3.2	SERVEIS SP2	9.69 m ²	
1.3.3	SERVEI ADAPTAT SP	4.53 m ²	
CODI	EXTERIORS		
3.4.1	TERRASSA	57.99 m ²	
TOTAL PLANTA COTA CIUTAT		274.49 m ²	326.40 m ²

8. Sala Gregal | 274,49 m²



Gregal Room - Audiovisual Equipment

- **Microphone system:** This will include a wireless system with two systems, consisting of two handheld transmitters, two belt-pack transmitters with headset microphones, and two UHF diversity receivers.
- **Audiovisual processing and distribution:** It will have a processor and amplifier for the audiovisual system, connected to the monitors and boxes distributed throughout the room. In addition, it can be controlled from a portable touchscreen tablet.
- **Sound system:** A set of 3 fixed column speakers will provide optimal sound for events in any of the room's configurations.
- **Content projection system:** This system will consist of two main 86" mobile monitors and two 65" auxiliary support monitors, all mounted on a mobile cart for greater positioning flexibility.
- **Video capture system:** This will be based on three PTZ video cameras, one fixed camera located on the central column and two mobile cameras on the large 86" monitors, connected to the streaming system to transmit the video signal over the network.
- **Streaming:** A system will be installed to broadcast the event (with video and audio signals) over the network.
- **Inductive loop system:** This system will include an inductive loop amplifier connected to the room's audio system, facilitating listening for people with hearing impairments. Three additional auxiliary audio inputs/outputs can also be added.
- **Wireless presentation system:** A wireless presentation system is included, with wireless connection buttons to facilitate the projection of presentation content without the need for cables.
- **Standalone videoconferencing system:** Each small monitor (65") located on the wheeled carts will include a videoconferencing bar, allowing small videoconferences to be held independently in a specific area of the room.

Contact

Roger Rocasalbas Argemí
Head of Commercial and Marketing
Area Port Olímpic

rrocasalbas@bsmsa.cat

